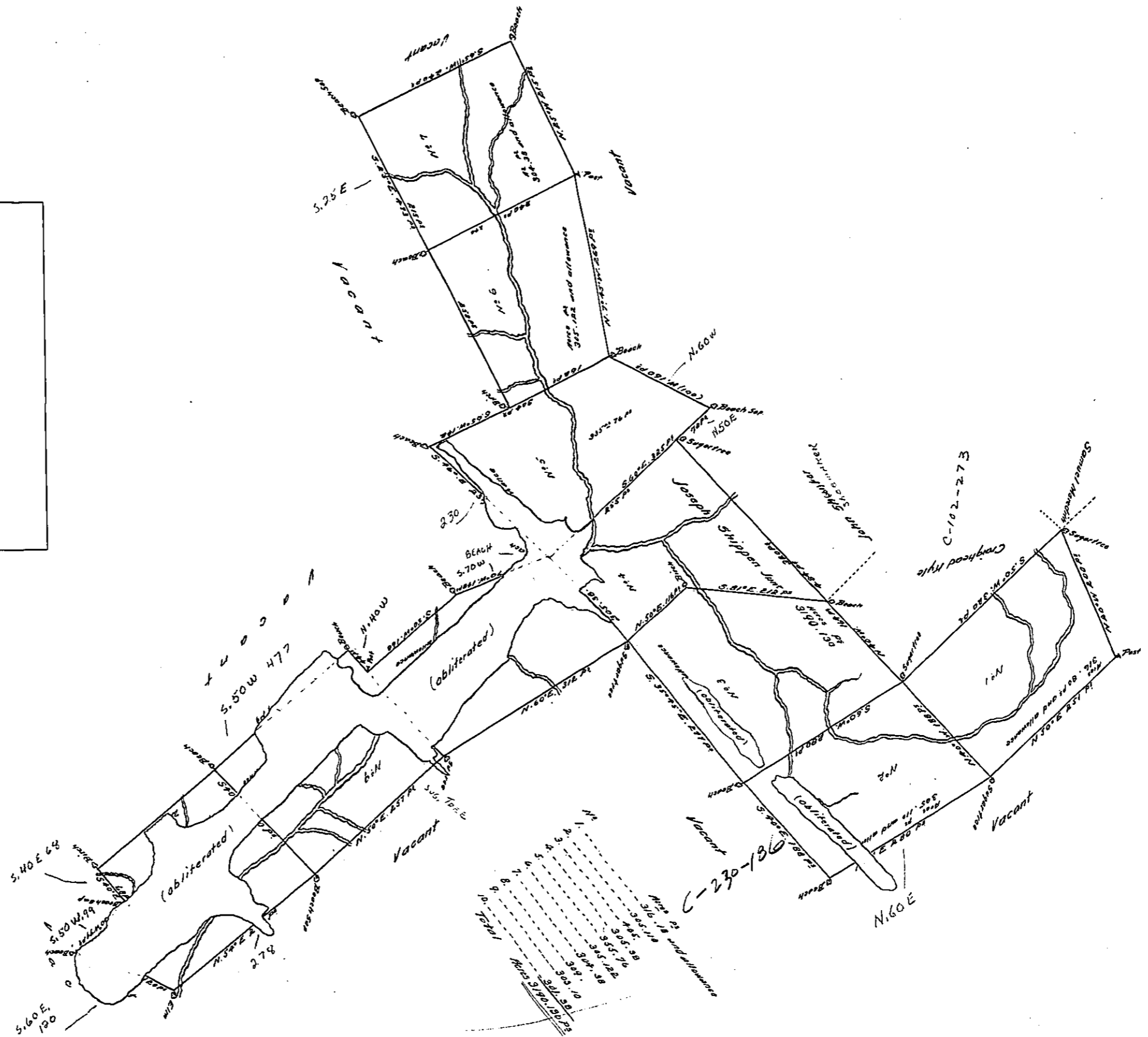


(Endorsement on back)  
 Northumberland County  
 Joseph Shippen Junr.  
 3190, 130 & allowance  
 Ref<sup>d</sup> to 1<sup>st</sup> March 1791



A Draught of a Tract of land called — Situate on the Waters of Wassaupin Creek about fourteen Miles from the North East Branch of Susquehanna River in the County of Northumberland including within the Bounds of this Survey the Tracts or Lots Number 1. 2. 3. 4. 5. 6. 7. 8. 9 & 10 as presented on this Draught and containing in all the quantity of three thousand and ninety Acres and One hundred & thirty perches besides the usual allowance of Six Percent for Roads &c. Surveyed the 5<sup>th</sup> 6<sup>th</sup> 7<sup>th</sup> days of November 1774 for Joseph Shippen Junr. In pursuance of a Warrant D<sup>d</sup> the 26<sup>th</sup> day of August 1774.  
 By Chas Stewart Depty Surv<sup>r</sup>

To John Lutens Esq<sup>r</sup> Survey<sup>r</sup> General.

In Testimony, That the above is a copy of the original remaining on file in the Department of Internal Affairs of Pennsylvania, made conformably to an Act of Assembly approved the 16<sup>th</sup> day of February, 1832, I have hereunto set my hand and caused the Seal of the said Department to be affixed, at Harrisburg, the twenty seventh day of June A.D. 1911.

Henry Howell,  
 Secretary of Internal Affairs.